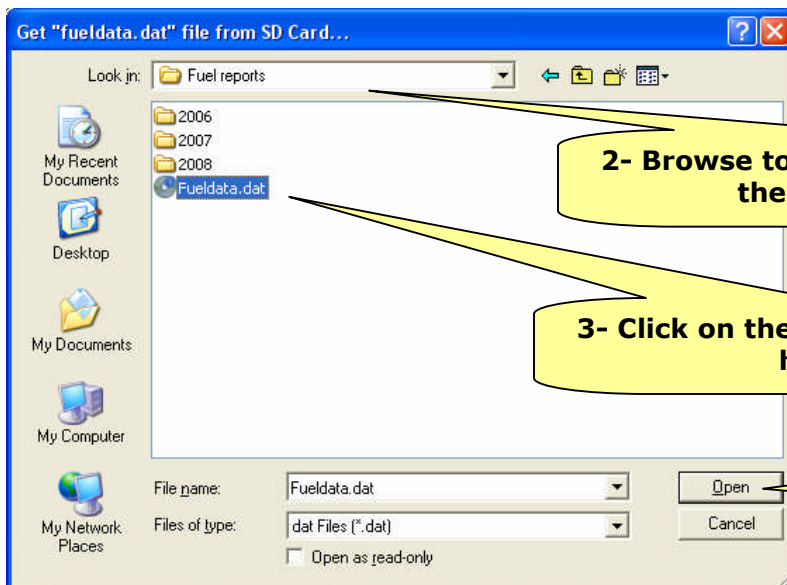
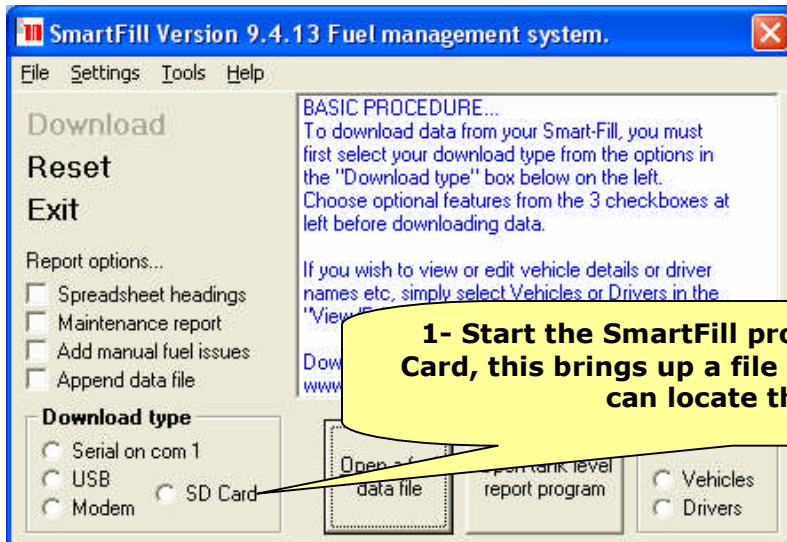


Importing a SmartFill fuel data file and processing in the SmartFill program.

Note, this will only operate in SmartFill version 9.4.13 or later.

First you must save your "fueldata.dat" files into a convenient folder each time you receive a new one from the person who has downloaded the SmartFill data. You can rename the file as required, but it must be kept as a .dat type file.



5- Create your fuel data reports following the prompts as required.