

SmartFill pc software upgrade to v9.4.16.

Creation of a fuel totals report summary, from multiple fuel issue data files.

What the upgrade does...

SmartFill version 9 software has been upgraded to allow you to create a fuel totals report which does 2 things...

- 1- Totalises the fuel amounts for each key, adding together the data from 1 or more fuel issue data files.
- 2- Reports the highest speedo / hourmeter reading for each key.

The upgrade will mainly benefit...

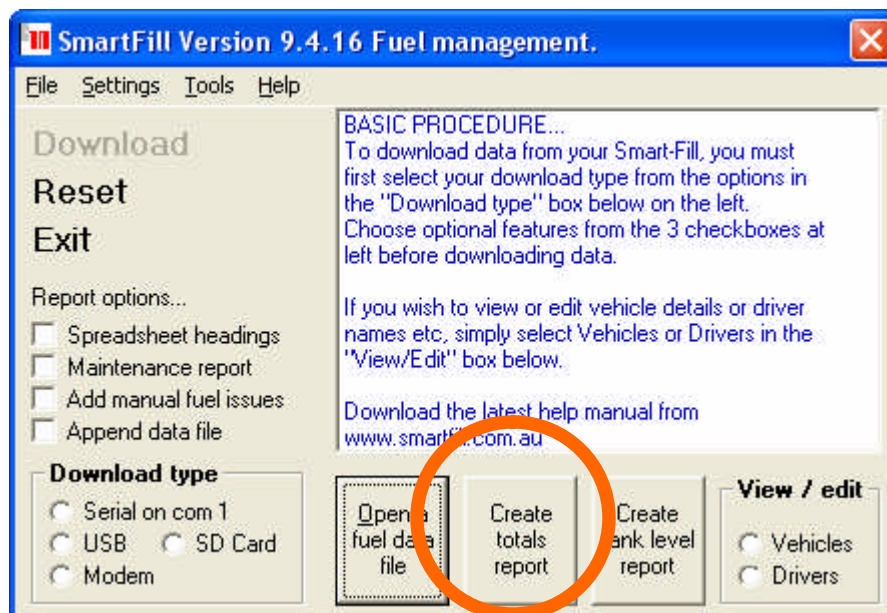
- 1- People who have more than one SmartFill, and would like to compile a single report summarizing fuel use for each key.
- 2- People who would like to create a totals report for the month, while still downloading data daily or weekly etc.

Important notes...

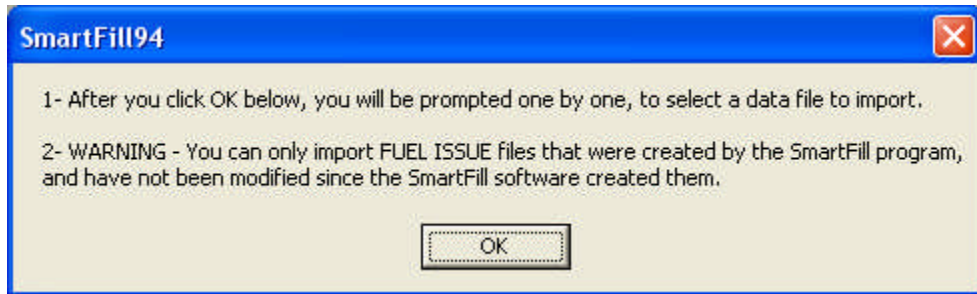
- 1- You can only import ISSUES data files, you can not import TOTALS files.
- 2- You can only import csv type data files which were created by the SmartFill software, and have not been changed / modified in any way.
- 3- The report will provide the highest speedo / odometer reading that has been entered for each key. This saves you from having to import the files in order from oldest to newest. So you can import them in any order.

How to generate a report...

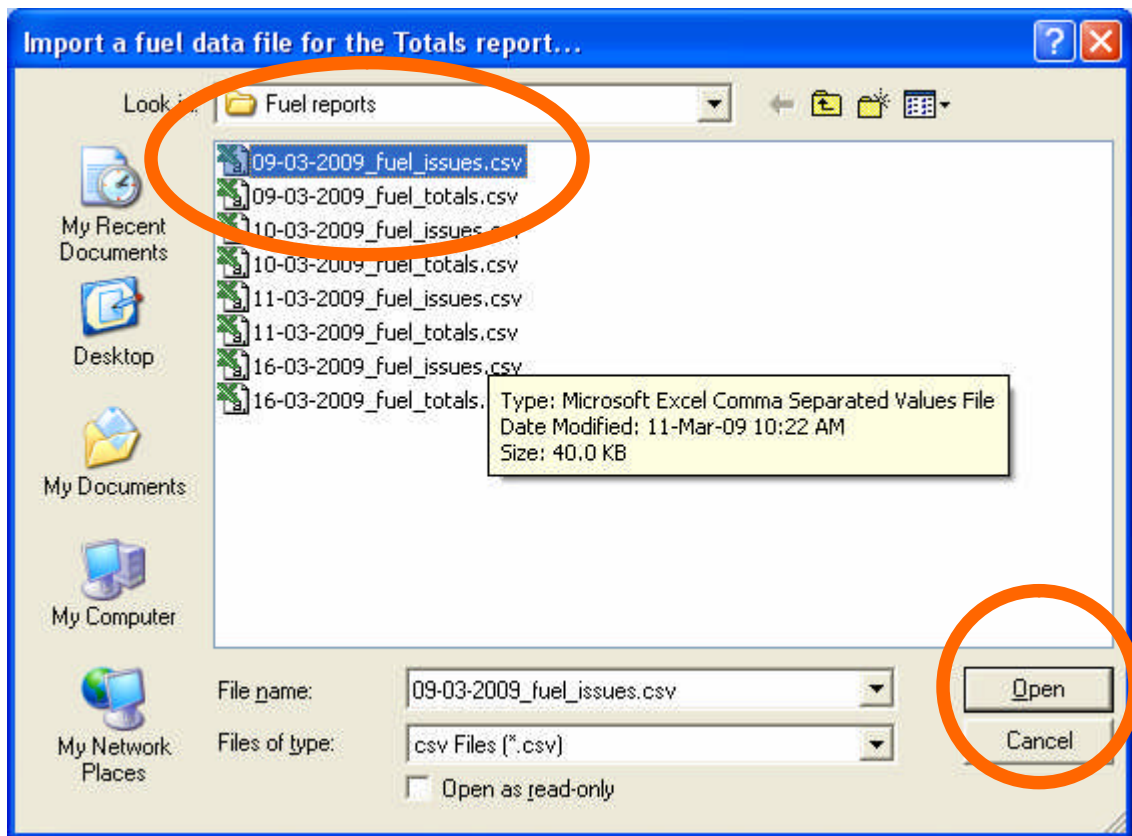
- 1- Start the SmartFill software, version 9.4.16 or later required.
- 2- Click on 'Create totals report'.



3- A warning popup will appear...

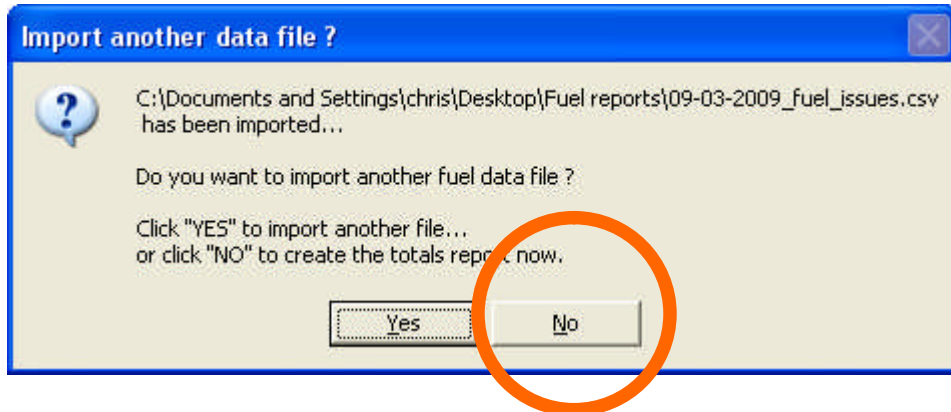


4- Select the first data file you wish to import, and click on **OPEN** – REMEMBER, you can only import unmodified **Issues** files, not totals files.

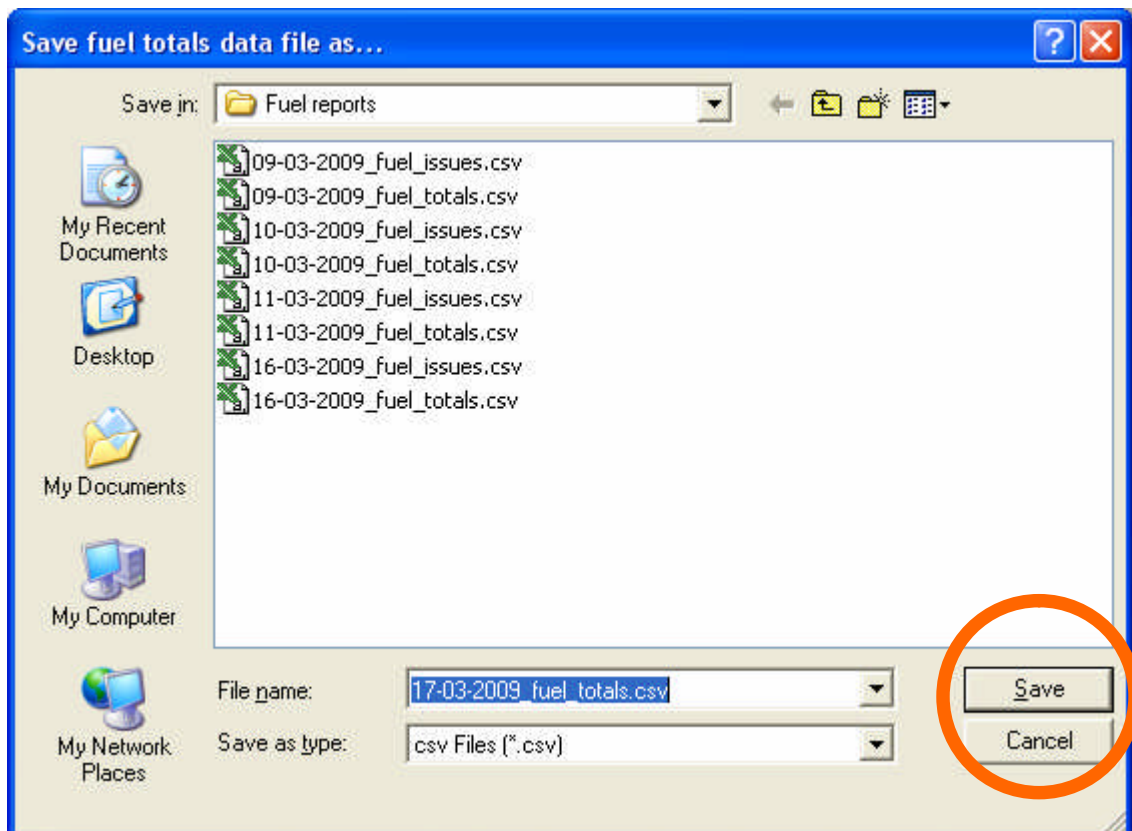


- 5- A popup will appear, giving you the option of ...
YES = Select another issues file to import, or
NO = Finish importing files and Save the totals report.

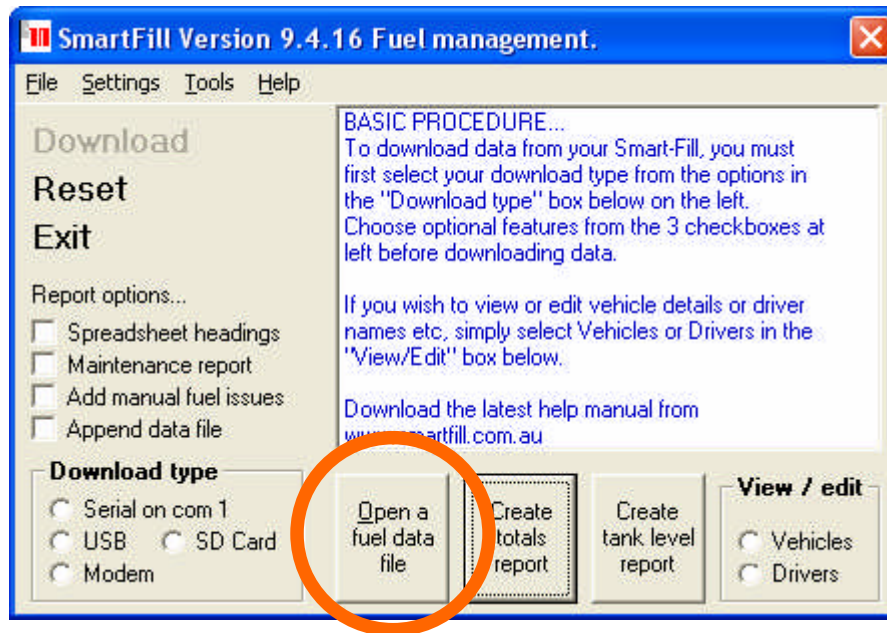
In this example we will click NO, as we wish to save the totals report.



- 6- A file save window now appears, and you can either save it as the default name, or change the location / name etc of the file as you wish. Then click on SAVE.



- 7- You can now open the totals report simply by clicking on 'Open fuel data file' in the main window.



- 8- When you have opened your totals report, you will see the totalised Litres, plus the highest odometer / hourmeter reading for each vehicle.

Also note – At the bottom of the report, is a summary of the combined total, plus a summary of the total for each fuel pump.