

# FUEL and OIL Security – Management - Recording



## Fuel management systems

### Smart-Fill...

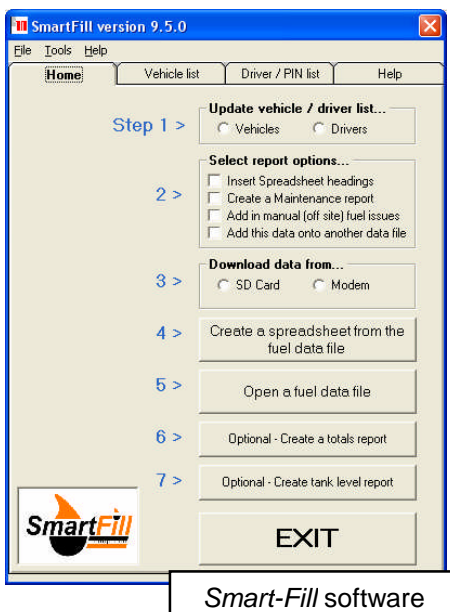
Is an electronic fuel-recording system, which is installed onto your fuel pump / service vehicle / lube bay etc. It provides 24-hour security, and records all fuel / oil taken. Your fuel usage data is later downloaded to your computer. A *Smart-Fill* will reduce the time taken to reconcile your fuel usage, will reduce fuel theft, and will help eliminate errors in your fuel / oil recording... it will also create basic maintenance reports for you.



NMI approved SmartFill

### Some of the many *Smart-Fill* features...

- **Costs less** than similar systems to purchase and install.
- Records fuel use for up to **2000 vehicles**.
- Records the past **3000 fuel issues in memory**, and warns you when the memory is getting low.
- It can control **up to 8 fuel / oil dispensers**, all delivering simultaneously.
- Uses secure vehicle keys, and driver pin numbers to control access to your fuel. The pin number system may be turned off if required. The manager can disable the vehicle keys and pin numbers at any time.
- Uses an **SD memory card** for simple download of fuel data to your office computer. No need to carry a laptop or printer to the bowser, or install underground data cables. This is a large cost saving.
- Options to download data to your pc by **mobile phone modem** or cable connection (rs232 or rs485).
- **A Satellite modem can be installed enabling you to access your Smart-Fill anywhere in the world.**
- Includes a **“No flow” timer** to prevent your pumps from running for long periods with no fuel flow.
- The system can be used as a **“preset” delivery system**. This is ideal for lube trucks or workshop lube dispensing systems. **You can run up to 8 pumps simultaneously all with their own preset amounts.**
- No battery backup is required for data memory, plus data is stored onto 2 separate memory chips as an additional backup.
- A **low memory warning** system tells you when you need to download data.
- It may be installed to just about any fuel bowser or bulk flow-meter.
- Housed in a tough, weatherproof enclosure, with **unpickable, high quality registered Abloy lock** and stainless steel door hinges, for use in all weather conditions outdoors. Enclosure rating is IP66.
- **Proven reliability around the world.**
- An ever-growing network of support.
- Lower price, through lower manufacturing overheads.
- **Smart-Fill records the following details for every fuel issue...**  
Vehicle, Person, Litres, Speedo/Hourmeter, Time and date, Pump number.



Smart-Fill software

Please visit the *Smart-Fill* web page for more information, sample data sheets, photos, manuals etc.

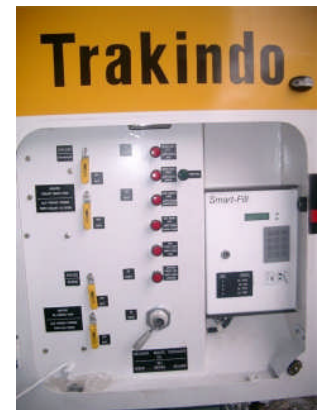
[www.smartfill.com.au](http://www.smartfill.com.au)

Smart-Fill vehicle access keys



Smart-Fill memory card

Smart-Fill may be installed onto mechanical and electronic fuel bowsers, bulk flowmeters, service trucks, lube bays, water, coolant and lubricant systems.



## HOW IT WORKS...

### Refueling a vehicle...

1. The person fuelling the vehicle touches the vehicle key onto the sensors on the *Smart-Fill* unit. This key identifies the vehicle to the *Smart-Fill*. If the vehicle key is not authorized, the fuel pump will not start.
2. The *Smart-Fill* then requests the drivers pin number (optional), and then the vehicle Speedo / hour meter reading. The driver enters these into the *Smart-Fill* keypad.
3. The *Smart-Fill* checks the pin number. (The pin number identifies the driver). If the pin number is not valid, the fuel pump will not start, if the pin number is OK, then the fuel pump works normally.
4. The driver fuels the vehicle, and when the fuel delivery has finished, the *Smart-Fill* stores the details in its memory.

### Transferring fuel data from the SmartFill to your office computer...

1. At the end of each month or your preferred time period, your fuel use data is copied from the *Smart-Fill* unit to your office computer using an SD memory card. This eliminates the need to run data cables or carry a laptop computer to the SmartFill.
2. You simply insert memory card inside the *Smart-Fill*, request it to copy the data, and wait until it beeps and tells you to remove the key. This operation copies all of your fuel data into the memory card.
3. You then take your memory card to your computer, and insert the card into the memory card reader slot.
4. The special *Smart-Fill* software on your computer then puts the data on your memory key directly into a spreadsheet format, which you can open in almost any spreadsheet program. i.e. Microsoft Excel® or Microsoft Works® etc. (The data format is a ".csv" (comma separated value) file).
5. You then clear the memory at your *Smart-Fill* unit to start the next fuel recording period, usually monthly, but you can choose how often you download the data.

The *Smart-Fill* has many features not found in systems that cost twice the price. Please take the time to obtain a quotation to install a complete system. When comparing prices, remember that you don't have to run data cables etc to a Smart-Fill system. You can also fit a GSM, NextG or Satellite phone modem to a *Smart-Fill* system and simply dial into the unit from your office computer to download the data.

### Sept 2009 ...

Over 1100 Smart-Fill systems are in use in Australia, Canada, Indonesia, New Caledonia, Vietnam, Mongolia, New Zealand and Oman.